

# MONTHLY MEMBERSHIP PROGRESS REPORT

LOCATION NEW JERSEY

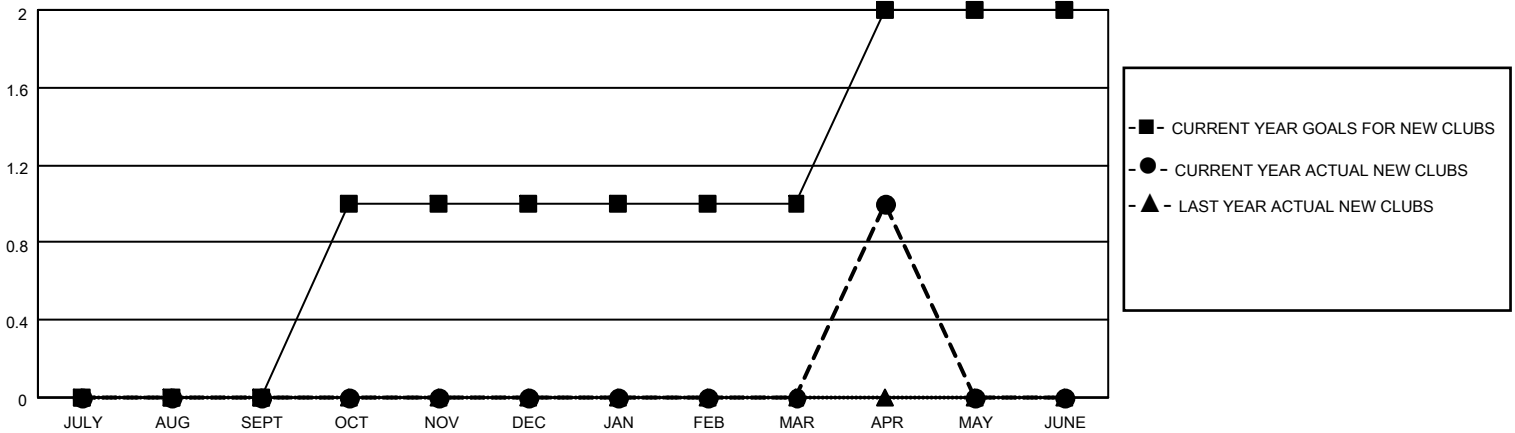
District 16 N

Results as of: 4/30/2022

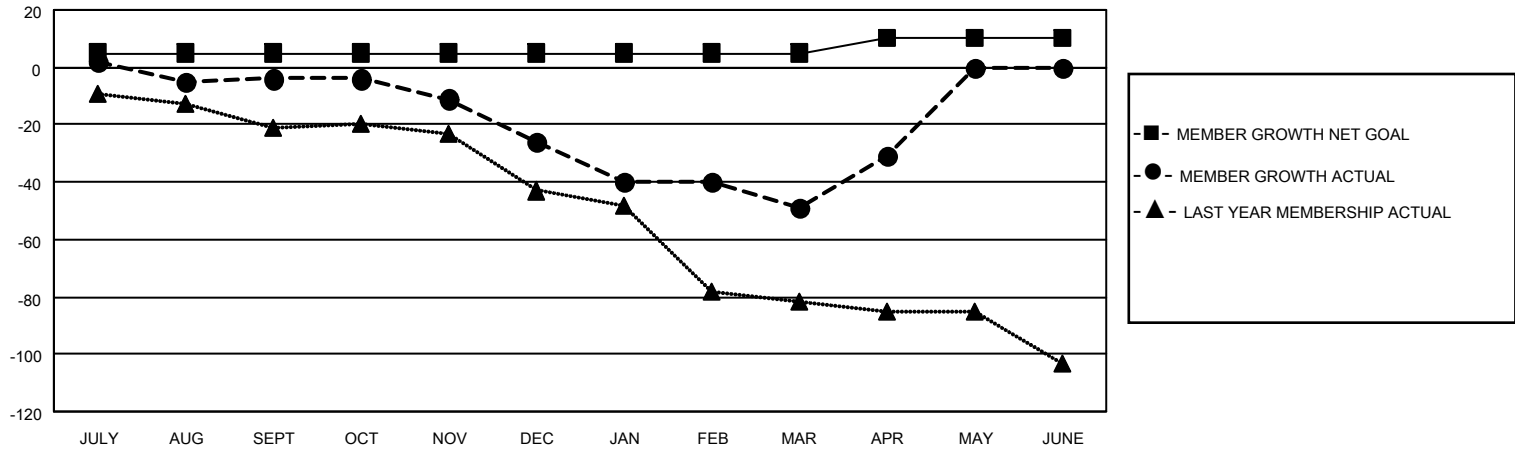
Clubs			
RESULTS FOR 2021-2022			
QUARTER	NEW CLUB GOAL	NEW CLUBS	DROPPED CLUBS
JULY/AUG/SEPT	0	0	0
OCT/NOV/DEC	1	0	1
JAN/FEB/MAR	0	0	0
APR/MAY/JUNE	1	1	0

Members			
RESULTS FOR 2021-2022			
QUARTER	MEMBER GROWTH NET GOAL	MEMBER GROWTH ACTUAL	DROPPED MEMBERS ACTUAL (including transfers)
JULY/AUG/SEPT	5	14	16
OCT/NOV/DEC	0	15	37
JAN/FEB/MAR	0	16	38
APR/MAY/JUNE	5	29	10

**GOALS AND ACTUAL NEW CLUBS CUMULATIVE**



**GOALS AND ACTUAL MEMBERS CUMULATIVE**



<b>DROPPED CLUBS: 1</b>	
<b>DROPPED MEMBERS</b>	
DECEASED	11
CLUB CANCELLED	9
OTHER	81
<b>TOTAL</b>	<b>101</b>

19 CLUBS OF 58 ADDED 1 OR MORE NEW MEMBERS

[CLICK HERE FOR CUMULATIVE MEMBERSHIP DATA](#)

<u>GENDER DISTRIBUTION</u>	
MALE	859 (70.07%)
FEMALE	366 (29.85%)
NON BINARY	0 (0.00%)
PREFER NOT TO ANSWER	1 (0.08%)
<hr/>	
TOTAL FAMILY UNIT MEMBERS	204
<hr/>	
FAMILY MEMBERS PAYING HALF DUES	106